

## Chassis

### Steering

(Not for vans and station wagons with live rear axle)

torque settings, in Nm	
Steering wheel nut	29 - 39
Steering column	13 - 18
U-joint	24 - 29
Track rod ball joint	29 - 39
Track rod lock nut	37 - 46
Rack and pinion steering box housing to firewall	73 - 97

Without power assisted steering

torque settings, in Nm	
Steering box sealing ring to steering shaft	64 - 74
Sealing ring lock nut	49 - 69
Type R22N:	
Lock plate sealing nut	39 - 59
Lock plate lock nut	10 - 15
Type R22S and R24S:	
Lock plate lock nut	39 - 59

With power assisted steering

torque settings, in Nm	
Self locking nut on steering shaft end	19 - 25
Steering box plug	49 - 69
Oil pipes	20 - 26
Lock plate sealing plate	16 - 21
Lock plate lock nut	10 - 15

## Brake system

(Not for vans and station wagons with live rear axle)

### Front disc brake

torque settings, in Nm	
Stub axle carrier to stub axle	54 - 64
Brake caliper to stub axle carrier:	
Florida/Station Wagon and 4WD	31 - 41
Except Florida/Station Wagon and 4WD	22 - 31
Hose to brake cylinder housing	17 - 20
Bleed nipple	7 - 9

### Rear disc brake

torque settings, in Nm	
Stub axle carrier to stub axle	38 - 52
Brake caliper to mounting	37 - 49
Hose to brake cylinder housing	17 - 20
Bleed nipple	7 - 9
Handbrake cable connection nut	37 - 49

### Drum brake

torque settings, in Nm	
Backing plate to stub axle	33 - 39
Brake cylinder housing	6 - 8
Bleed nipple	7 - 9

## Suspension

### Front suspension

(Not for vans and station wagons with live rear axle)

torque settings	
Hub nut	196 - 275 Nm

**Note:** The torque setting of nuts and bolts securing rubber components applies to empty vehicles with wheels on the ground and tank full.

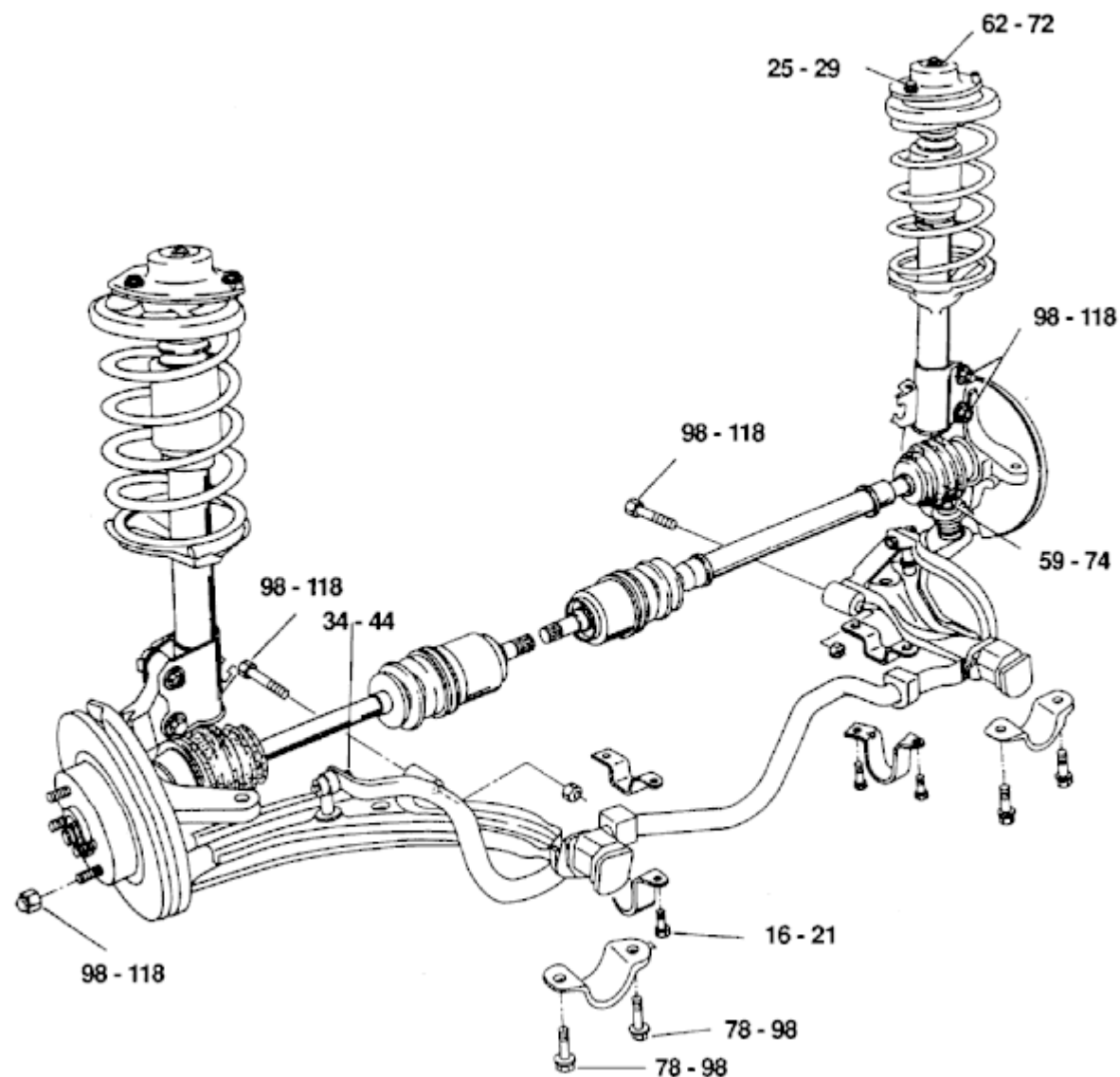
See also the next page

### Rear suspension

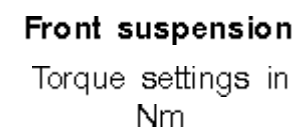
(Not for vans and station wagons with live rear axle)

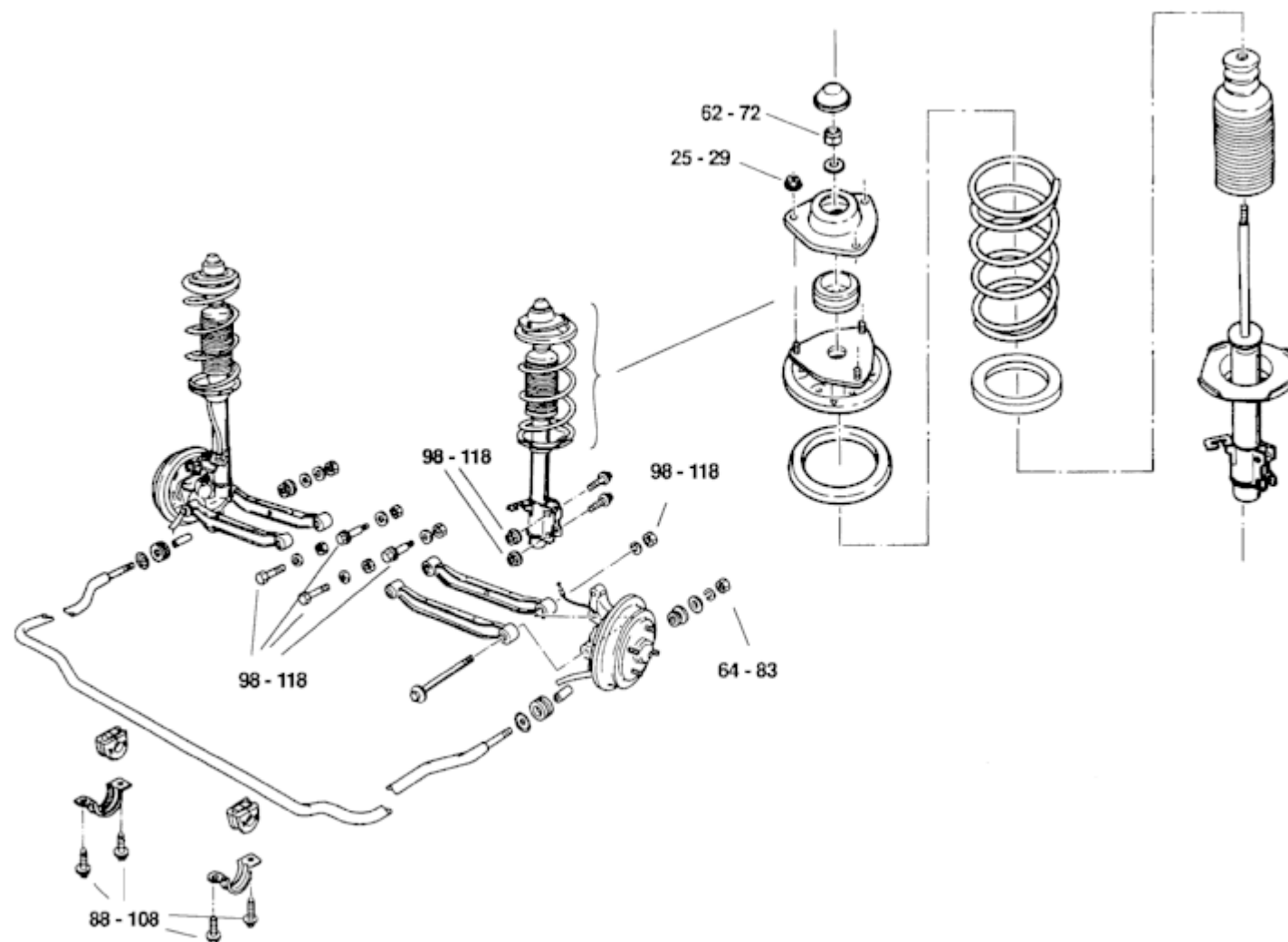
torque settings	
Hub nut	186 - 255 Nm
Wheel nuts	98 - 118 Nm

**Note:** The torque setting of nuts and bolts securing rubber components applies to empty vehicles with wheels on the ground and tank full.

**Front suspension**

Torque settings in Nm



**Rear suspension**

Torque settings in  
Nm